

# RAINIER PROPERTY MANAGEMENT CO, LLC

**FOR LEASE – 15235 Aurora Ave. N, Shoreline, WA**



- Suite 101 - 1,200 SF of ground-floor retail or office space
- Base Rent \$24.00/SF/Year + \$9.35/SF/Year NNN
- Ample off-street parking
- Easy access from Aurora Avenue North

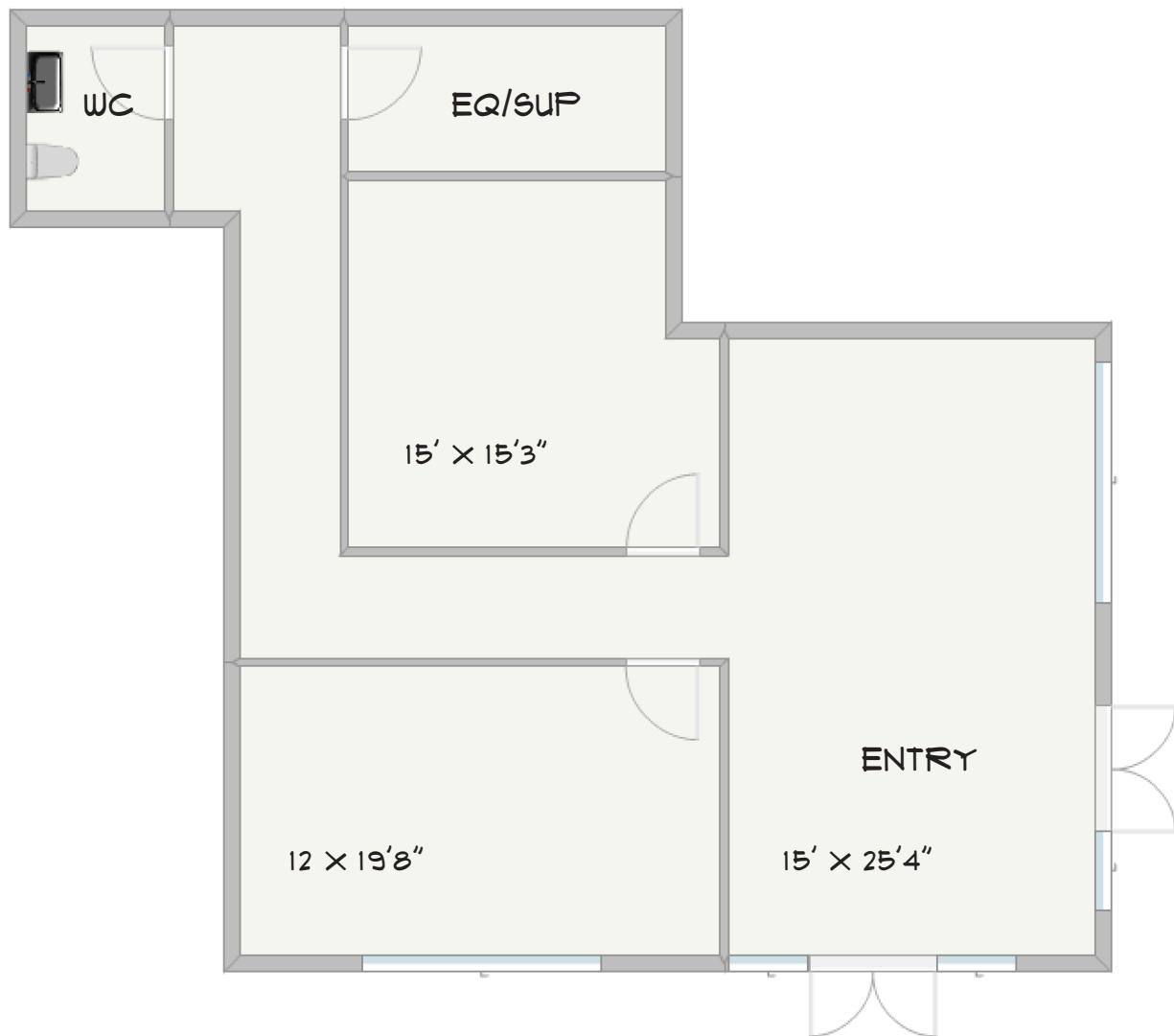
**Ryan Megenity, CCIM**  
**Rainier Property Management Co, LLC**  
**12199 Village Center Place, Suite 201**  
**Mukilteo, WA 98275**

**Phone: 425-252-3626**

**Email: [ryan@rpmcousa.com](mailto:ryan@rpmcousa.com)**



15235 AURORA AVE N STE 101  
SHORELINE, WA 98133  
1200 SF



-AURORA AVE-

The information provided herein has been obtained from sources believed to be reliable, but no representation or warranty, express or implied, is made with respect to the accuracy or completeness of any such information. Each prospective buyer or tenant should independently investigate, evaluate and verify all information provided herein and any other matters deemed material. Please consult your attorney, tax advisor or other professional advisor. The terms of sale or lease set forth herein are subject to change or withdrawal at any time and without notice.