

**RAINIER PROPERTY MANAGEMENT CO, LLC**

**FOR LEASE**

**Suite 201, 1729 208<sup>th</sup> St. SE, Bothell, WA 98012**



- **980 SF office space on the second floor**
- **Base Rent \$24.00/SF/Year + \$8.55/SF/Year NNN**
- **Plentiful off-street parking**

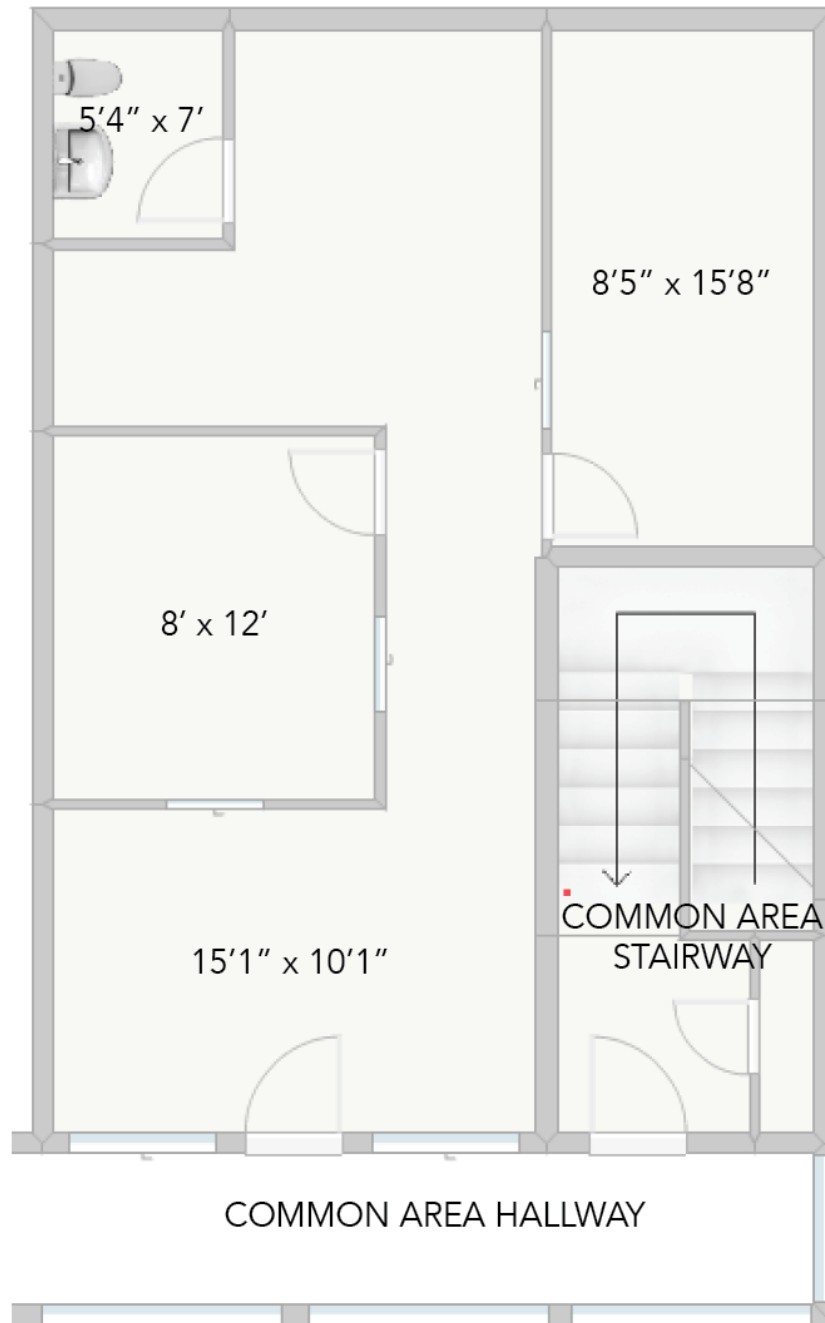
**Ryan Megenity, CCIM**  
**Rainier Property Management Co, LLC**  
**12199 Village Center Place, Suite 201**  
**Mukilteo, WA 98275**

**Phone: 425-252-3626**

**Email: [ryan@rpmcousa.com](mailto:ryan@rpmcousa.com)**



1729 208TH ST SE STE 201 - BOTHELL, WA 98012  
790 SF



The information provided herein has been obtained from sources believed to be reliable, but no representation or warranty, express or implied, is made with respect to the accuracy or completeness of any such information. Each prospective buyer or tenant should independently investigate, evaluate and verify all information provided herein and any other matters deemed material. Please consult your attorney, tax advisor or other professional advisor. The terms of sale or lease set forth herein are subject to change or withdrawal at any time and without notice.